



LINKED CRYSTAL COMPONENTS

Linked Crystal Components are made of loose crystals linked together, be it with thread or metal. They can be divided into three sub-categories: Flat Back Bandings, Crystal Mesh, and Cupchains. They are suitable for use in a wide range of segments such as textiles and accessories.

Flat Back Bandings are Flat Backs in metal cups, being held together by thread. They are available with net edge on one or both sides and can be glued, sewn by hand or machine. They are available in large variety of platings and crystal colors.

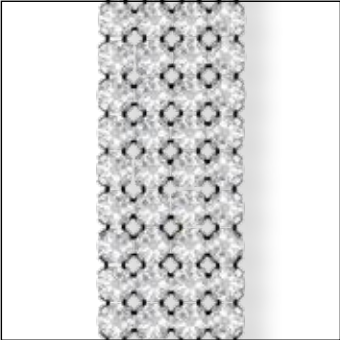
Crystal Mesh is a flexible metal mesh carrier with integrated loose crystals. The product is available in a wide range of colors and casings, either as a Hotfix version, which can be applied using heat, or as a No Hotfix version, which can be hand or machine sewn. Customized solutions are possible and customers are able to choose special motifs incorporating up to nine colors.

Cupchains are metal chains that incorporate a Round Stone. They are offered in a large variety of colors and sizes. Cupchains can be soldered, plated, sewn by hand, or machine.

FLAT BACK BANDINGS

ARTICLE EXPLANATION

55 000



R	001-024
E	2088 SS 20
M	10 M
	100%

55 000	R	E	M	100%
Article number	Number of rows	Elements	Minimum order quantity in meters (M)	% of actual size
	This article is available from 1 to 24 rows.	Crystal and stone size used		

ORDERING EXAMPLE & PRODUCT VARIETY EXPLANATION

55 000	004	012	082	001
Article number	3-digit code for number of rows	Color of thread (without net edge) 012 Black (without net edge) 022 White (with net edge) 112 Black (on 1 side) 212 Black (on 2 sides) 122 White (on 1 side) 222 White (on 2 sides)	Color of casing 081 Gold 082 Silver 086 Gun Metal 088 Stainless Steel (for 55 000 and 55 001 only)	Color of crystals Please see the respective product matrix for all available reference codes.

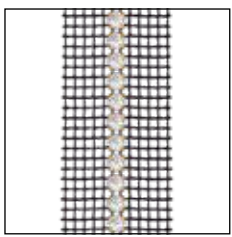
Please note: articles with 1 row are only available with net edge on one or two sides.
The articles 55 001 and 55 501, however, can be ordered without net edge.

AVAILABLE OPTIONS WITH NET EDGE

All Flat Back Bandings can be ordered with net edge. This option can be added to one or both sides of the banding. Please see the respective product matrix for all available options.



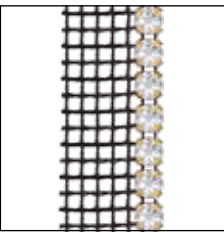
112 Black net edge
on 1 side



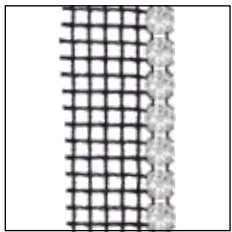
212 Black net edge
on 2 sides

AVAILABLE COMBINATIONS OF THREAD & CASING

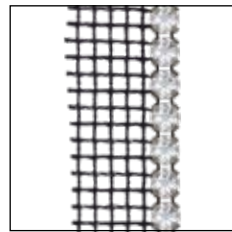
Flat Back Bandings are available in four different casing colors and can be combined with two different thread/net edge colors. Please see the respective product matrix for all available options.



112 081
Black thread,
gold plated casing



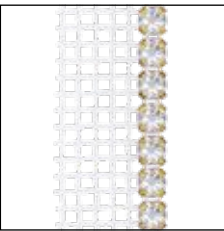
112 082
Black thread,
silver plated casing



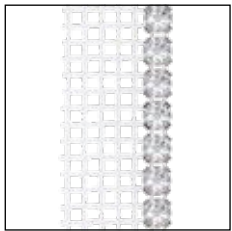
112 086
Black thread,
gun metal plated casing



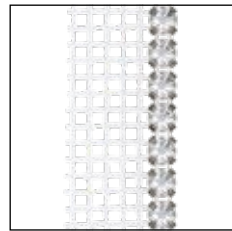
012 082
Black thread,
silver plated casing



122 081
White thread,
gold plated casing



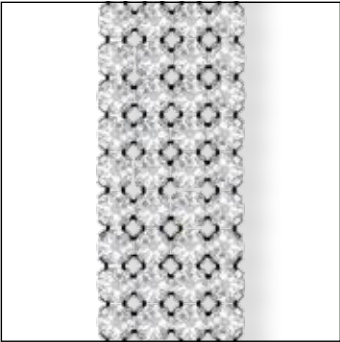
122 082
White thread,
silver plated casing



122 086
White thread,
gun metal plated casing

Please note: the connective cotton thread differs from the net edge.

55 000

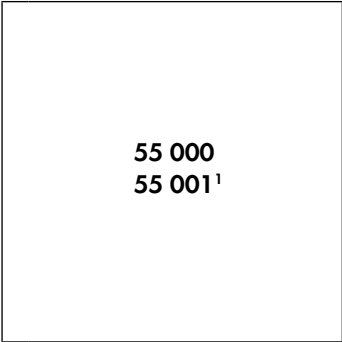


R 001-024
E 2088 SS 20
M 10 M 100%

55 001¹



R 001
E 2088 SS 20
M 10 M 100%



Crystal

Crystal F (001)

Colors

Plain Colors

- Amethyst F (204)
- Aquamarine F (202)
- Black Diamond F (215)
- Blush Rose F (257)
- Denim Blue F (266)
- Emerald F (205)
- Greige F (284)
- Iris F (219)
- Jet F (280)
- Light Colorado Topaz F (246)
- Majestic Blue F (296)
- Scarlet F (276)
- Siam F (208)

Crystal Effects

Transparent Effects

- Crystal Aurore Boreale F (001 AB)
- Crystal Blue Shade F (001 BLSH)
- Crystal Golden Shadow F (001 GSHA)
- Crystal Silver Night F (001 SINI)

Metallic Effects

Crystal Rose Gold F (001 ROGL)

Crystal Lacquer^{PRO} Effects

Crystal Electric Lacquer^{PRO} Effects*

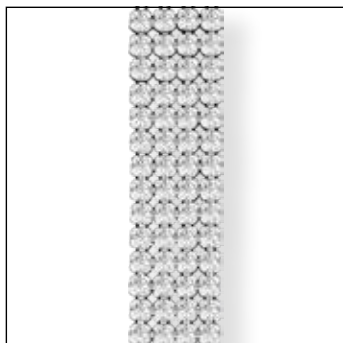
- Crystal Electric Blue (001 L134S)
- Crystal Electric Green (001 L135S)
- Crystal Electric Orange (001 L136S)
- Crystal Electric Pink (001 L137S)
- Crystal Electric Violet (001 L148S)
- Crystal Electric White (001 L139S)
- Crystal Electric Yellow (001 L138S)

Color of Thread / Net edge	Color of Casing
012 / 112 / 212 Black	081 Gold
022 / 122 / 222 White	082 Silver
	086 Gun Metal
	088 Stainless Steel

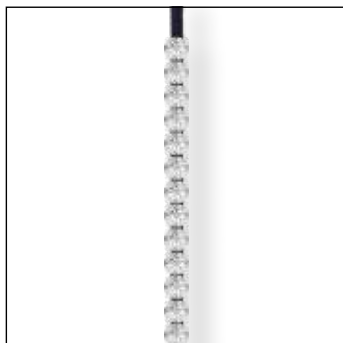
¹ Art. 55 001 is not available with net edge. When ordering one row with net edge, art. 55 000 should be used.

* The Electric Lacquer^{PRO} effects are UV light resistant. Nonetheless, due to the presence of neon pigments in the lacquers, Swarovski recommends using the crystals only under artificial lights, as excessive sun exposure can cause the pigments to fade.

55 500



R 001-024
E 2088 SS 12
M 10 M **100%**

55 501¹

R 001
E 2088 SS 12
M 10 M **100%**

55 500 55 501 ¹		Color of Thread / Net edge		Color of Casing	
		012 / 112 / 212 Black	022 / 122 / 222 White	081 Gold	082 Silver
				086 Gun Metal	
Crystal					
	Crystal F (001)				
Colors					
Plain Colors					
	Amethyst F (204)				
	Aquamarine F (202)				
	Black Diamond F (215)				
	Blush Rose F (257)				
	Denim Blue F (266)				
	Emerald F (205)				
	Greige F (284)				
	Iris F (219)				
	Jet F (280)				
	Light Colorado Topaz F (246)				
	Majestic Blue F (296)				
	Scarlet F (276)				
	Siam F (208)				
Crystal Effects					
Transparent Effects					
	Crystal Aurore Boreale F (001 AB)				
	Crystal Blue Shade F (001 BLSH)				
	Crystal Golden Shadow F (001 GSHA)				
	Crystal Silver Night F (001 SINI)				
Metallic Effects					
	Crystal Rose Gold F (001 ROGL)				
Crystal Lacquer ^{PRO} Effects					
Crystal Electric Lacquer ^{PRO} Effects*					
	Crystal Electric Blue (001 L134S)				
	Crystal Electric Green (001 L135S)				
	Crystal Electric Orange (001 L136S)				
	Crystal Electric Pink (001 L137S)				
	Crystal Electric Violet (001 L148S)				
	Crystal Electric White (001 L139S)				
	Crystal Electric Yellow (001 L138S)				

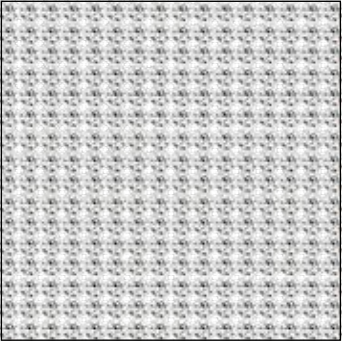
¹ Art. 55 501 is not available with net edge. When ordering one row with net edge, art. 55 500 should be used.

* The Electric Lacquer^{PRO} effects are UV light resistant. Nonetheless, due to the presence of neon pigments in the lacquers, Swarovski recommends using the crystals only under artificial lights, as excessive sun exposure can cause the pigments to fade.

CRYSTAL MESH STANDARD

ARTICLE EXPLANATION - SHEETS

40 000



SH	100
S	~500x200
E	1088 PP21
M	1 SH100%

40 000	SH	S	E	M	100%
Article number	Sheet	Sheet size in mm	Elements Crystal and stone size used	Minimum order quantity in sheets (SH)	% of actual size

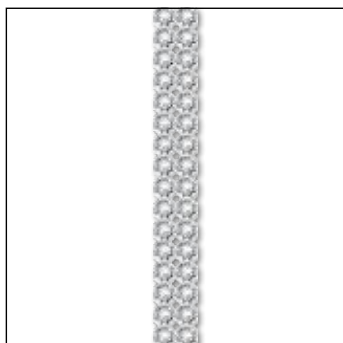
ORDERING EXAMPLE & PRODUCT VARIETY EXPLANATION

40 000	100	082	001	NOHF
Article number	Sheet	Color of casing	Color of crystals	Hotfix Technology
	100 Standard sheet (~500x200 mm)	012 Black ¹ 081 Gold ² 082 Silver ² 088 Stainless Steel	Please see the respective product matrix for all available reference codes.	HF With Hotfix glue NOHF Without Hotfix glue

¹ Base material for 012 Black-colored casing: aluminum
² Base material for 081 Gold and 082 Silver-colored casing: brass

ARTICLE EXPLANATION - ROWS

40 001

**R** 002-033**E** 1088 PP21**M** 10 M **100%**

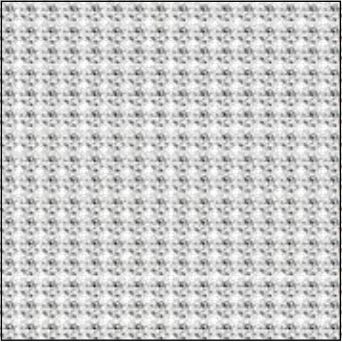
40 001	R	SS	M	100%
Article number	Number of rows This article is available from 2 to 33 rows.	Elements Crystal and stone size used	Minimum order quantity in meters (M)	% of actual size

ORDERING EXAMPLE & PRODUCT VARIETY EXPLANATION

40 001	002	082	001	HF
Article number	3-digit code for number of rows	Color of casing 012 Black ¹ 081 Gold ² 082 Silver ² 088 Stainless Steel	Color of crystals Please see the respective product matrix for all available reference codes.	Hotfix Technology HF With Hotfix glue NOHF Without Hotfix glue

¹ Base material for 012 Black-colored casing: aluminum² Base material for 081 Gold and 082 Silver-colored casing: brass

40 000



SH	100
S	~500x200
E	1088 PP21
M	1 SH100%

40 001



R	002-033
E	1088 PP21
M	10 M100%

40 000 40 001		Color of Casing			
		012 Black	081 Gold	082 Silver	088 Stainless Steel
Crystal					
Crystal F (001)					
Colors					
Plain Colors					
Amethyst F (204)					
Aquamarine F (202)					
Black Diamond F (215)					
Emerald F (205)					
Iris F (219)					
Jet (280)					
Light Amethyst F (212)					
Light Colorado Topaz F (246)					
Light Rose F (223)					
Light Sapphire F (211)					
Light Siam F (227)					
Sapphire F (206)					
Scarlet F (276)					
Siam F (208)					
Silk F (391)					
Tanzanite F (539)					
Vintage Rose F (319)					
Crystal Effects					
Transparent Effects					
Crystal AB F (001 AB)					
Crystal Golden Shadow F (001 GSHA)					
Crystal Silver Night F (001 SINI)					
Crystal Silver Shade F (001 SSHA)					

AVAILABLE CASING COLORS

Crystal Mesh Standard is available with black, gold and silver-colored casings, as well as Stainless Steel casing.



012 Black



081 Gold



082 Silver

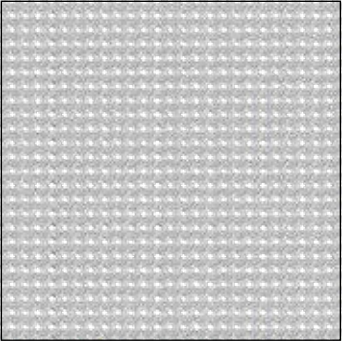


088 Stainless Steel

CRYSTAL FINE MESH

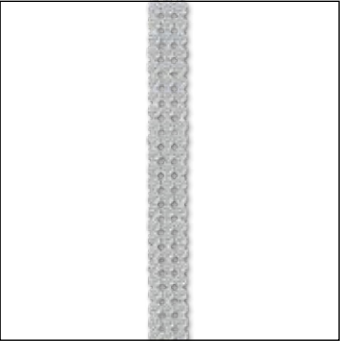
ARTICLE EXPLANATION

40 600



SH	100
S	~500x200
E	1028 PP9
M	1 SH100%

40 601



R	003-033
E	1028 PP9
M	10 M100%

CRYSTAL FINE MESH

40 600	SH	S	E	M	100%
Article number	Sheet	Sheet size in mm	Elements Crystal and stone size used	Minimum order quantity in sheets (SH)	% of actual size

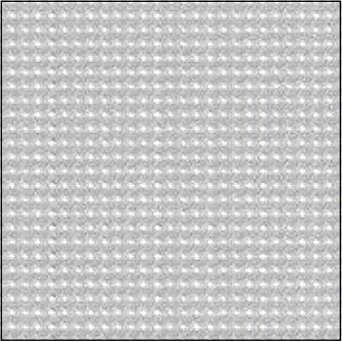
40 601	R	E	M	100%
Article number	Number of rows	Elements Crystal and stone size used	Minimum order quantity in meters (M)	% of actual size

¹ Base material for 081 Gold and 082 Silver-colored casing: brass

ORDERING EXAMPLE & PRODUCT VARIETY EXPLANATION

40 600	100	082	001	NOHF
Article number	100 Standard Sheet (500x200 mm)	Color of casing 081 Gold ¹ 082 Silver ¹	Color of crystals Please see the respective product matrix for all available reference codes.	Hotfix Technology HF With Hotfix glue NOHF Without Hotfix glue
40 601	003	082	001	HF
Article number	3-digit code for number of rows	Color of casing 081 Gold ¹ 082 Silver ¹	Color of crystals Please see the respective product matrix for all available reference codes.	Hotfix Technology HF With Hotfix glue NOHF Without Hotfix glue

40 600



SH	100
S	~500x200
E	1028 PP9
M	1 SH 100%

40 601

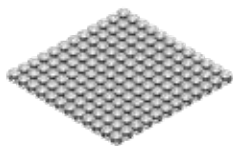


R	003-033
E	1028 PP9
M	10 M 100%

40 600 40 601		Color of Casing	081 Gold	082 Silver
Crystal				
	Crystal F (001)			
Colors				
Plain Colors				
	Amethyst F (204)			
	Aquamarine F (202)			
	Black Diamond F (215)			
	Emerald F (205)			
	Iris F (219)			
	Jet (280)			
	Light Amethyst F (212)			
	Light Colorado Topaz F (246)			
	Light Rose F (223)			
	Light Sapphire F (211)			
	Light Siam F (227)			
	Sapphire F (206)			
	Scarlet F (276)			
	Siam F (208)			
	Silk F (391)			
	Tanzanite F (539)			
	Vintage Rose F (319)			
Crystal Effects				
Transparent Effects				
	Crystal AB F (001 AB)			
	Crystal Golden Shadow F (001 GSHA)			
	Crystal Silver Night F (001 SINI)			
	Crystal Silver Shade F (001 SSHA)			

AVAILABLE CASING COLORS

Crystal Fine Mesh is available with gold and silver-colored casing.
Please see the respective product matrix for all available options.



012 Silver



081 Gold

PRODUCT DETAILS

Article Size	Packing Unit = Minimum Order Quantity	Average Net Weight in Grams per Packing Unit in Alu ¹	Average Net Weight in Grams per Packing Unit in Brass ²
40 000			
100	1 sheet	270 g	440 g
40 001			
002-033	10 meters	8.3 g per row/meter	13 g per row/meter
40 600			
100	1 sheet		251g
40 601			
003-033	10 meters		4.5 g per row/meter

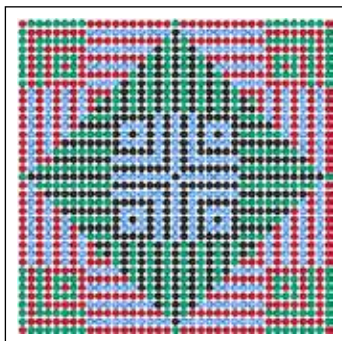
CRYSTAL FINE MESH & CRYSTAL MESH MOTIFS

¹ Base material for 012 Black-colored casing: aluminum
² Base material for 081 Gold and 082 Silver-colored casing: brass

CRYSTAL MESH MOTIFS

ARTICLE EXPLANATION

41 013

**C** 012-276/205/206/280**E** PP21/PP21/PP21/PP21**S** ~109x109**M** 4 PCS **38%**

41 013	C	E	S	M	38%
Article number	Color assortment	Elements For details, please refer to the sizes overview at the end of the Collection.	Motif size in mm	Minimum order quantity in pieces (PCS)	% of actual size

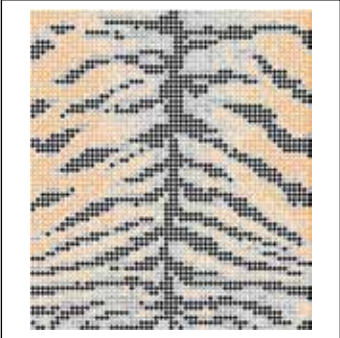
ORDERING EXAMPLE & PRODUCT VARIETY EXPLANATION

41 013	012	276	205	206
Article number	Color of casing 012 Black ¹ 081 Gold ² 082 Silver ²	Crystal color corresponding to element 1; color of the most frequently used element in the motif. Please see the respective product matrix for all available reference codes.	Crystal color corresponding to element 2; color of the second most frequently used element in the motif.	Crystal color corresponding to element 3; color of the third most frequently used element in the motif.

¹ Base material for 012 Black-colored casing: aluminum² Base material for 081 Gold and 082 Silver-colored casing: brass

STANDARD COLLECTION

41 005



C	081-280/215/001SSHA/246/001GSHA
E	PP21/PP21/PP21/PP21/PP21
S	~168x192
M	2 PCS 22%

41 006



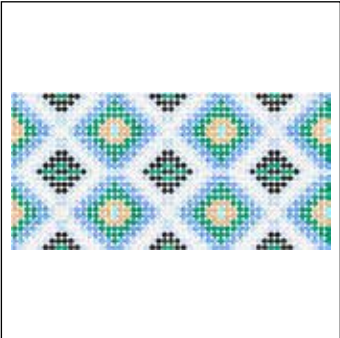
C	081-280/246/001SSHA/001GSHA/001SINI
E	PP21/PP21/PP21/PP21/PP21
S	~168x192
M	2 PCS 22%

41 007



C	082-391/319/223/001/212
E	PP21/PP21/PP21/PP21/PP21
S	~156x17
M	33 PCS 27%

41 008



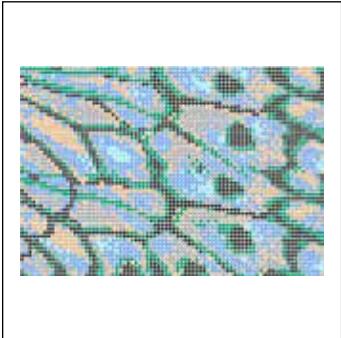
C	088-211/206/001/205/280/001GSHA/202
E	PP21/PP21/PP21/PP21/PP21/PP21/PP21
S	~150x74
M	6 PCS 28%

41 009



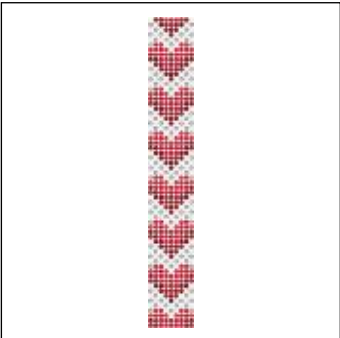
C	088-001/001GSHA/208/205/227/204/202/539/206
E	PP21/PP21/PP21/PP21/PP21/PP21/PP21/PP21/PP21
S	~209x153
M	2 PCS 20%

41 010



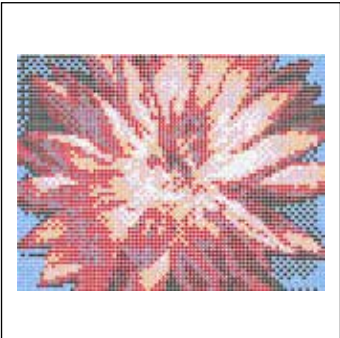
C	012-206/215/280/205/001GSHA/202
E	PP21/PP21/PP21/PP21/PP21/PP21
S	~236x162
M	2 PCS 17%

41 011



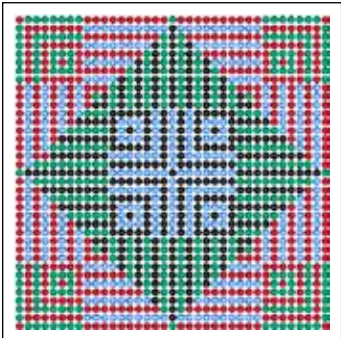
C	088-001/276/208/215/227
E	PP21/PP21/PP21/PP21/PP21
S	~26x186
M	18 PCS 22%

41 012



C	082-001GSHA/276/212/227/208/204/280/206/001
E	PP21/PP21/PP21/PP21/PP21/PP21/PP21/PP21/PP21
S	~239x183
M	2 PCS 17%

41 013



C	012-276/205/206/280
E	PP21/PP21/PP21/PP21
S	~109x109
M	4 PCS 38%

SPECIAL MOTIF SERVICE

A special motif is a design created by the customer that differs to the Crystal Mesh Standard Collection. This service opens up an abundance of customization possibilities and enables you to profit from Swarovski's long-standing experience and design expertise. A range of customization options for existing motifs is available (see "Customization Possibilities" below). You can also submit design

sketches that meet your special needs, such as a brand image or an image for a particular sales campaign. This will then be made up according to your specifications using Computer Aided Design, which means that adjustments can be made easily according to your needs.

Customization Possibilities

- Change of size of an existing motif
- Logos or brand names
- Creation of single motifs or rows
- Up to nine colors are possible per Crystal Mesh Motif.

Ordering Process

Send your request with the drawing you wish to order to your nearest Swarovski sales office. Make sure you include all measurements for the desired motif. Please also indicate which product group your special motif applies to (Crystal Mesh). You will then receive a quotation including your article number,

minimum order quantity, price, and the line drawing of your special motif in PDF format. Please contact your Swarovski sales office again if any changes need to be made. Your special motif will be produced and delivered following your confirmation.

Please Note

Please always submit the drawing of your desired motif to represent it in the actual size you require. A small sketch, when enlarged to the desired size, will have blurred lines that will make it difficult to correctly reproduce. Pictures or drawings representing 100% size of the design or very good quality scans in JPG, BMP, or DXF format will ensure that we have clear data to work with. These can also be sent via email or on CD-ROM. If sending a sewing pattern, please include the whole pattern and not just sections. When the sketch is submitted as a hard copy by fax or

email, please include a scale legend (e.g. copy/scan with a ruler next to the drawing). This will ensure that the desired size of the motif can be identified.

Special productions are generally offered to all our customers if these are deemed to be feasible and comply with our General Terms and Conditions. Please note ordering of a design does not grant exclusive production of this design to the customer.

CUPCHAINS

ARTICLE EXPLANATION – BASE ITEM NUMBER

27 004 Round Cupchain



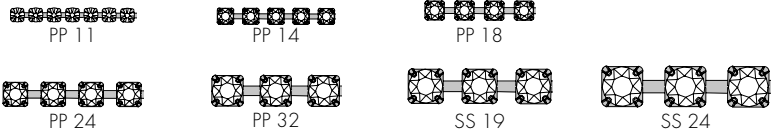
2	7	0	04
Product category	Stone code (type of stone used)	Setting code	Number of prongs in the setting (always 2-digit code)
2 Cupchains	7 Round	0 Basic 1 Extended	04

CUPCHAINS

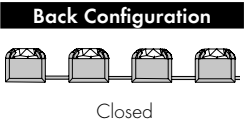
ORDERING EXAMPLE & PRODUCT VARIETY EXPLANATION

1	27 004	P24	00	C
Material type	Base item number	Stone size	Ring configuration	Back configuration
1 Brass		3-digit code from respective product matrix	00 None	C Closed
C1	Z	1028	F	001
Stone pattern	Plating	Base item art. no.	Foiling	Color of crystal
A1 Crystal with effect	Z No Plating	1028	F Foiled	
C1 Color	H Rhodium	1088		
K1 Crystal				
F2 2 alternate colors				
F3 3 alternate colors				
F4 4 alternate colors				
F5 5 alternate colors				
F6 6 alternate colors				

27 004 Round



Stone Size		Ring Configuration		Back Configuration		Stone Art. No.	
Code	Description	Code	Description	Code	Description	1028	1088
P11	PP 11	00	None	C	Closed	■	
P14	PP 14	00	None	C	Closed		■
P18	PP 18	00	None	C	Closed		■
P24	PP 24	00	None	C	Closed		■
P32	PP 32	00	None	C	Closed		■
S19	SS 19	00	None	C	Closed		■
S24	SS 24	00	None	C	Closed		■

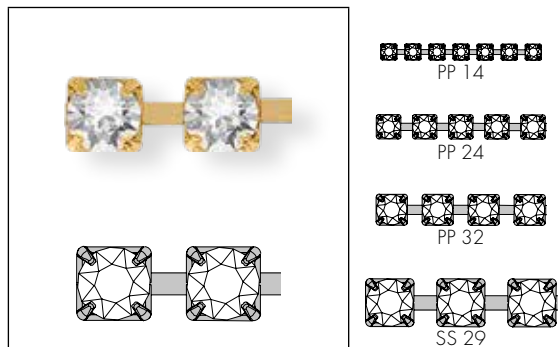


AVAILABLE CRYSTAL COLORS

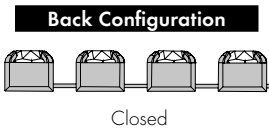
Please see the respective product matrix for 1028 XILION Chaton on page 29 and 1088 XIRIUS Chaton on page 30-31 for all available colors and effects. ¹

¹ The plating resistance of effects should be considered and can be verified using the Color Chart on page 26.

27 104 Round Extended



Stone Size		Ring Configuration		Back Configuration		Stone Art. No.
Code	Description	Code	Description	Code	Description	
P14	PP 14	00	None	C	Closed	
P24	PP 24	00	None	C	Closed	
P32	PP 32	00	None	C	Closed	
S29	SS 29	00	None	C	Closed	



AVAILABLE CRYSTAL COLORS

Please see the respective product matrix for 1088 XIRIUS Chaton on page 30-31 for all available colors and effects.¹

¹ The plating resistance of effects should be considered and can be verified using the Color Chart on page 26.